



Mara Porini Camp

OL KINYEI CONSERVANCY



Mara Porini Camp has recently been set up in the exclusive 8,500 acre wildlife conservancy of Ol Kinyei, one of the most beautiful wilderness areas in the Serengeti-Mara eco-system. This is pristine wilderness with open savannah plains, riverine forest, springs, streams and rivers, rolling hills and spectacular views across the Mara. Ol Kinyei belongs to a Maasai community who has recently set aside the conservancy as a sanctuary for wildlife. The conservancy holds a wide variety of the animal species for which the Mara is famous including a large resident pride of lions.

LOCATION

The camp is located less than 18 kms from the Maasai Mara park boundary. Ol Kinyei Conservancy is 250 kms from Nairobi by road - a 4 hour journey. It has its own airstrip for private charter flights and is 16 kms from the Siana airstrip used by the daily scheduled flights to Mara from Nairobi.

THE CAMP

The Porini camp has 6 guest tents sited in the shade of Yellow-barked Acacia trees along the banks of the Laetoli, a permanent spring within Ol Kinyei. The tents are spacious and each has an en-suite bathroom with flush toilet and safari shower. With no more than 12 guests in camp one gets the experience of real camping in the bush in an exclusive private wilderness but with all the comforts required by discerning travellers. Food is excellent with home baked bread, fresh salads and high quality meals prepared by the camp Chef.

THE EXPERIENCE



Qualified safari guides enhance the experience by educating the guests about the flora, fauna and people of the surrounding areas. Guests are taken on day and night game drives in our custom built open-sided 4x4's. In the evening they are taken to a scenic spot, to enjoy a drink while watching the sun go down. A night game drive is taken on the way back to camp, giving guests the opportunity to see many of the elusive nocturnal animals. Maasai warriors escort guests on a walk in the conservancy where they can learn about how the various indigenous animals and plants are used by the community and how their way of life is intertwined with their surroundings.

DAILY PROGRAMME

During your stay, clients will normally have a programme as follows, but of course we're flexible and there to cater to what you'd like:

DAY 1

Depart on 10.00 flight from Wilson airport to the Mara. Met at airstrip by Porini staff and transferred to Porini Camp for lunch. In the afternoon you will go on a game drive to explore the conservancy ending with a sundowner and a night game drive. Return to camp for a shower, dinner and overnight.

DAY 2

Full day in Maasai Mara with a picnic lunch. Driving in our custom built 4x4 vehicles, on the lookout for the big cats which the Mara is famous for. Sundowner & night game drive. Return to camp for dinner and overnight.

DAY 3

Early morning walk in the conservancy followed by breakfast and then transfer to the airstrip for the flight to Nairobi, arriving Wilson airport at 12.15.

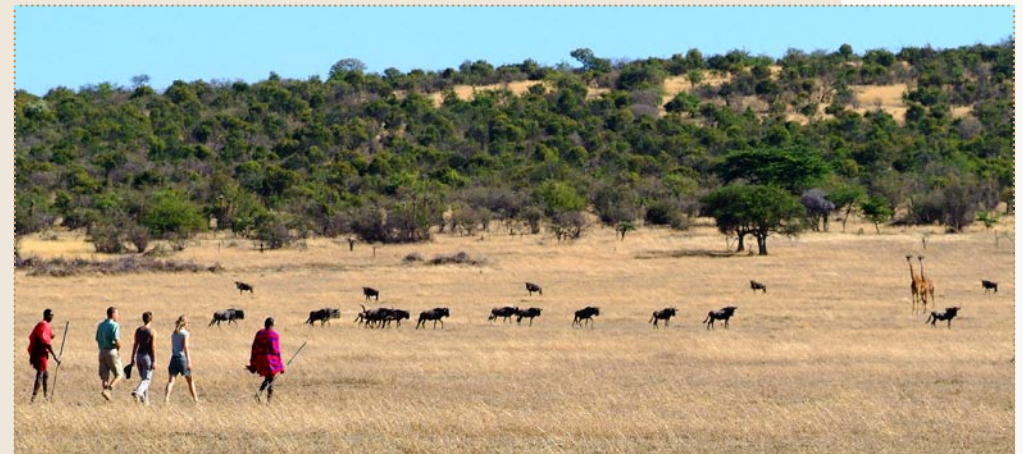
FACILITIES AND ACTIVITIES:

- Large Safari tents with a double and single bed, solar electric lights, en suite bathrooms with flush toilet and safari shower.
- All meals and picnic lunches, free mineral water, sodas, gin & tonic, beer and house wine.
- Custom built 4x4 safari vehicles for game drives.
- Expert driver-guides. Morning, evening and night game drives
- in Ol Kinyei Conservancy.
- Full day in Mara National Reserve with picnic lunch.
- Escorted walk with Maasai guides.
- Sundowner drinks to watch the sunset from scenic viewing points.
- Transfers from Siana airstrip to Camp.

CONSERVATION

The Maasai community members are receiving a direct benefit from wildlife and see wildlife as a valuable resource which belongs to them. They earn a direct income from each guest in the conservancy and also much needed employment for their members. Other than the head chef, camp manager and head guide all the other camp staff, conservancy rangers and workers are from the surrounding communities. Our Porini Camp is run and maintained with the conservation of the environment at the forefront. The numbers of tourist visitors are being limited to 12 per day to retain the wild and unspoilt nature of the area and to minimise the impact on the environment. During their stay our guests have various opportunities to learn about the local Maasai people and how the Ol Kinyei Conservancy and Porini Camps' goals are aligned with theirs.

Our Porini Camps are run and maintained with the conservation of the environment at the forefront. We have a written environmental policy in regards to water, land, energy, solid waste and sewage which is adhered to by the camp management.



P.O.Box 388 - 00621 Village Market, Nairobi, Kenya
Tel: +254 (0) 20 7123129, 7122504, 7121851 Fax: +254 (0) 20 7120864
Cell: +254 (0) 722 509200, +254 (0) 735339209 Email: info@porini.com
www.porini.com